

Suntronic's Direct Sunlight Outdoor LCD

32" LCD High Tni Panel Enhancement to prevent isotropic blackout under direct Sun up to 110°C/230°F
Water/Dust/Rain Proof 1000nits Daylight Readable
Rugged LCD 5F to 140F/-30C ~ 60C

U3200HDP

FEATURES:

- **1000nits Completely Direct Sunlight Viewable**
All Aluminum IP65/NEMA4 Vandal Resistant Enclosures (5 sides)
- **High Tni Panel Enhancement to prevent isotropic blackout under direct Sun up to 110°C/230°F**
- **Suitable Operating 24 hrs/day**
- Built-in Waterproof Speakers 10Watts x 2
- Air Curtain cooling design and Automatic Thermostatic cut off.
- Optional Integrated Touch screen, Computer, Heater, Portrait mode and CAT5 Video Extender

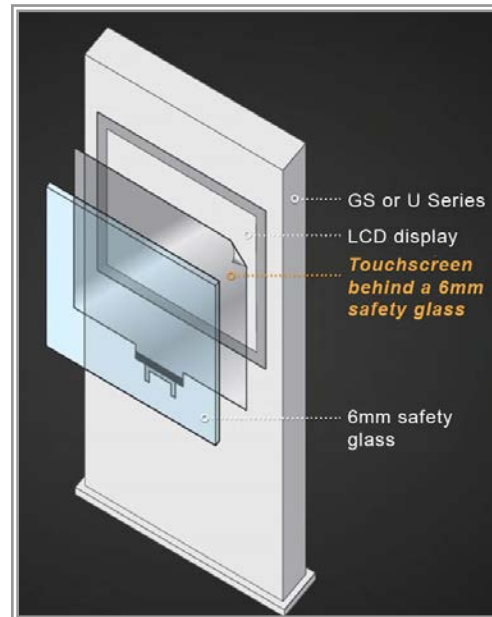
SPECIFICATIONS:

Display Size:	32" TFT-LCD
Resolution Capabilities:	1920 x 1080 Full HD
Frame Rate	60Hz
Response Time:	8ms typical
Viewing Angle:	178°x178°
Contrast Ratio:	3000 : 1
Brightness:	1000 cd/m², Completely Daylight Viewable
Orientation:	Landscape Mode
Backlight MTBF:	60,000 Hours Typical
Colors Supported:	10 bit
Video Interface:	VGA, HDMI , Min Display Port
Audio Out:	3.5mm Audio output
Speaker:	Included 10Watts x 2
Power Source:	100-120VAC 50/60Hz
Power Consumption:	165 Watt (w/o heater)
Temperature:	Operating: -15° to 60°C (5F to 140F) (Optional heater reach to -22F/-30C) Storage: -30° to 60°C
Humidity:	Operating: 5 to 90% NC Storage: 5 to 95% NC
Operating Time	24/7/365
Dimensions:	32.6" (w) x 21.47" (h) x 6.18" (d) 829.6mm x 545.7mm x 157mm
Weight	75lbs /34kg
IP Rating:	All Aluminum Enclosures IP65/NEMA4 (Except Bottom is IP54)
RS232:	Control via command code (Optional)
Mount Pattern	400 x 200

GS and U Series Touch screen Options

Laminate the touch foil behind a safety glass the glass and integrate into our GS or U Series.

Fitting behind the glass to create a vandal and weather proof touch solution. Ideal for outside enclosures.



Glass:	6mm laminated Safety AR coating
Auto Power On/Off:	Yes
Auto Signal On/Off:	Yes
Options:	IR Touch screen/ Projective Capacitive Touch/ Wide Temp PC/ CAT5 Video Extender/portrait mode/Stainless steel Enclosures
Life Time	Life time 60K hours, operating time 20hrs/per day
Anti Shock/ Anti Vibration	Shock 30G / Anti Shock 35G XYZ, Anti-Vibration 1G (10-300Hz)
Warranty:	Return to Depot Warranty1 year
**Remarks: L for Landscape and P for portrait	



High Quality Parts

Our company uses only the best, using only High Quality parts along with components in USA or imported from Korea, Taiwan and Germany, for quality that you can trust!



Customer Service

Our customer service reps are here to help you with your Outdoor LCD sign. From general questions to technical support, we leave you feeling completely satisfied.

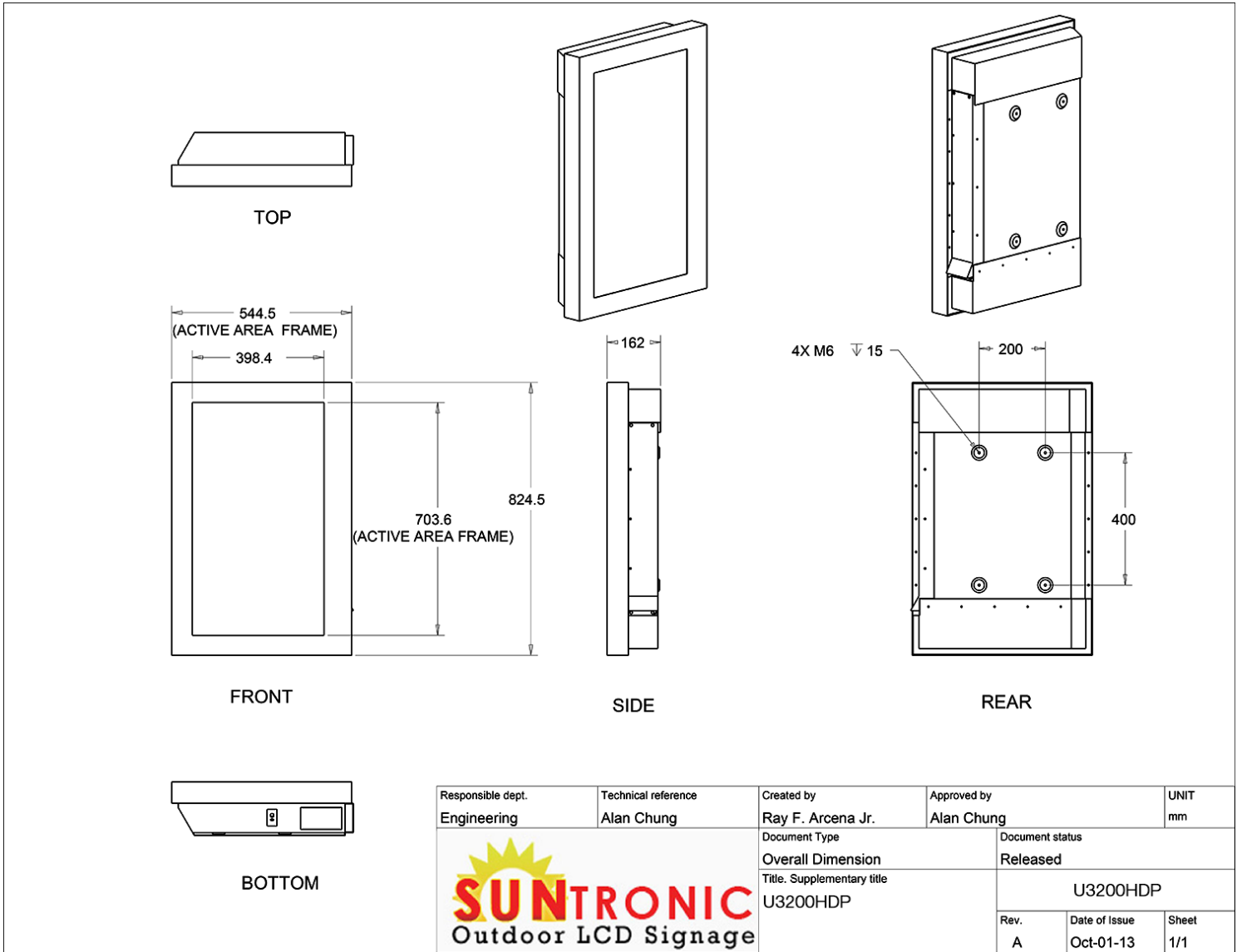


US Manufactured

Our Outdoor LCD Signs are assembled, tested and shipped from our very own factory in USA, giving us the ability to customize signs to your needs.



MECHANICAL DRAWING:



High Quality Parts

Our company uses only the best, using only High Quality parts along with components in USA or imported from Korea, Taiwan and Germany, for quality that you can trust!



Customer Service

Our customer service reps are here to help you with your Outdoor LCD sign. From general questions to technical support, we leave you feeling completely satisfied.



US Manufactured

Our Outdoor LCD Signs are assembled, tested and shipped from our very own factory in USA, giving us the ability to customize signs to your needs.

