

SUNTRONIC'S DIRECT SUNLIGHT OUTDOOR LCD

Fully work under direct sunlight 75" (Portrait Mode) High Brightness LCD and IP54 Metal enclosures (Front and Back), IP54 Bottom, 1920 x 1080, Brightness 2500nits LED Backlight Contrast Ratio 5000:1, Power input 220V AC, Operating Temp 5F to 131F (-15C to 55C) (Strength Safety 6mm glass Glass. HDMI VGA, Mini display (Optional add heater reach to -22F). One (1) Year Return to Depot Warranty, Life time 60K hours, operating Time 20 hours/Per day
** No Audio/ Just video only ****

U7500P2

FEATURES:

- **2500nits Completely Direct Sunlight Viewable**
IP65/NEMA4 Vandal Resistant Enclosures (5 sides)
- **(High Tni Panel Enhancement to prevent isotropic blackout under direct Sun up to 110°C/230°F)**
- **Circular polarized light enable through polarized sunglasses**
- NO Audio
- Air Curtain cooling design and Automatic Thermostatic cut off.
- Optional Integrated Touch screen, Computer, Heater, Portrait mode and CAT5 Video Extender

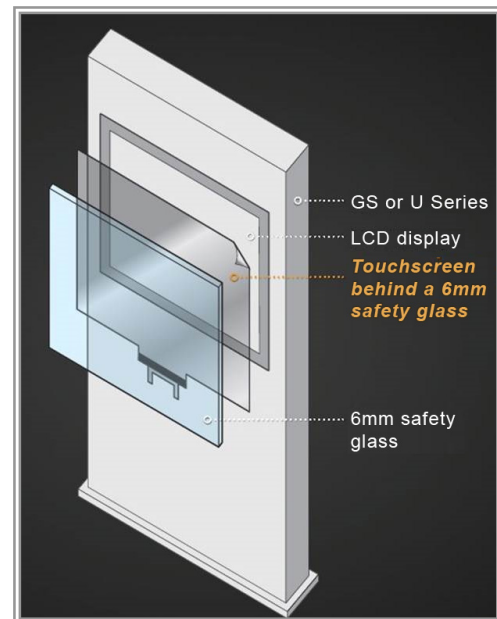
SPECIFICATIONS:

Display Size:	75" TFT-LCD
Resolution Capabilities:	1920 x 1080 Full HD
Frame Rate	60Hz
Response Time:	8ms typical
Viewing Angle:	178°x178°
Contrast Ratio:	5000 : 1
Brightness:	2500 cd/m², Completely Daylight Viewable
Orientation:	Portrait Mode
Backlight MTBF:	60,000 Hours Typical
Colors Supported:	10 bit 1.07 Billion
Video Interface:	VGA, HDMI , Min Display Port
Audio Out:	3.5mm Audio output
Power Source:	220V AC 50/60Hz
Power Consumption:	595 Watt for complete monitor
Temperature:	Operating: -15° to 55°C (5F to 131F) (Optional heater reach to -22F/-30C) Storage: -30° to 60°C
Humidity:	Operating: 5 to 90% NC Storage: 5 to 95% NC
Operating Time	24/7/365
Dimensions:	1791mm H x 1115mm W x 293mm D
Weight	290lbs
Shipping Weight	350lbs
IP Rating:	Enclosures IP65/NEMA4 (Except Bottom is IP54)
RS232:	Control via command code (Optional)
Mount Pattern	1000 x 400

GS and U Series Touch screen Options

Laminate the touch foil behind a safety glass the glass and integrate into our GS or U Series.

Fitting behind the glass to create a vandal and weather proof touch solution. Ideal for outside enclosures.



Auto Power On/Off:	Yes
Auto Signal On/Off:	Yes
Options:	IR Touch screen/ Projective Capacitive Touch/ Wide Temp PC/ CAT5 Video Extender/portrait mode/Stainless steel Enclosures
Warranty:	Return to Depot Warranty1 year

****Remarks: L for Landscape and P for portrait**



High Quality Parts

Our company uses only the best, using only High Quality parts along with components in USA or imported from Korea, Taiwan and Germany, for quality that you can trust!



Customer Service

Our customer service reps are here to help you with your Outdoor LCD sign. From general questions to technical support, we leave you feeling completely satisfied.

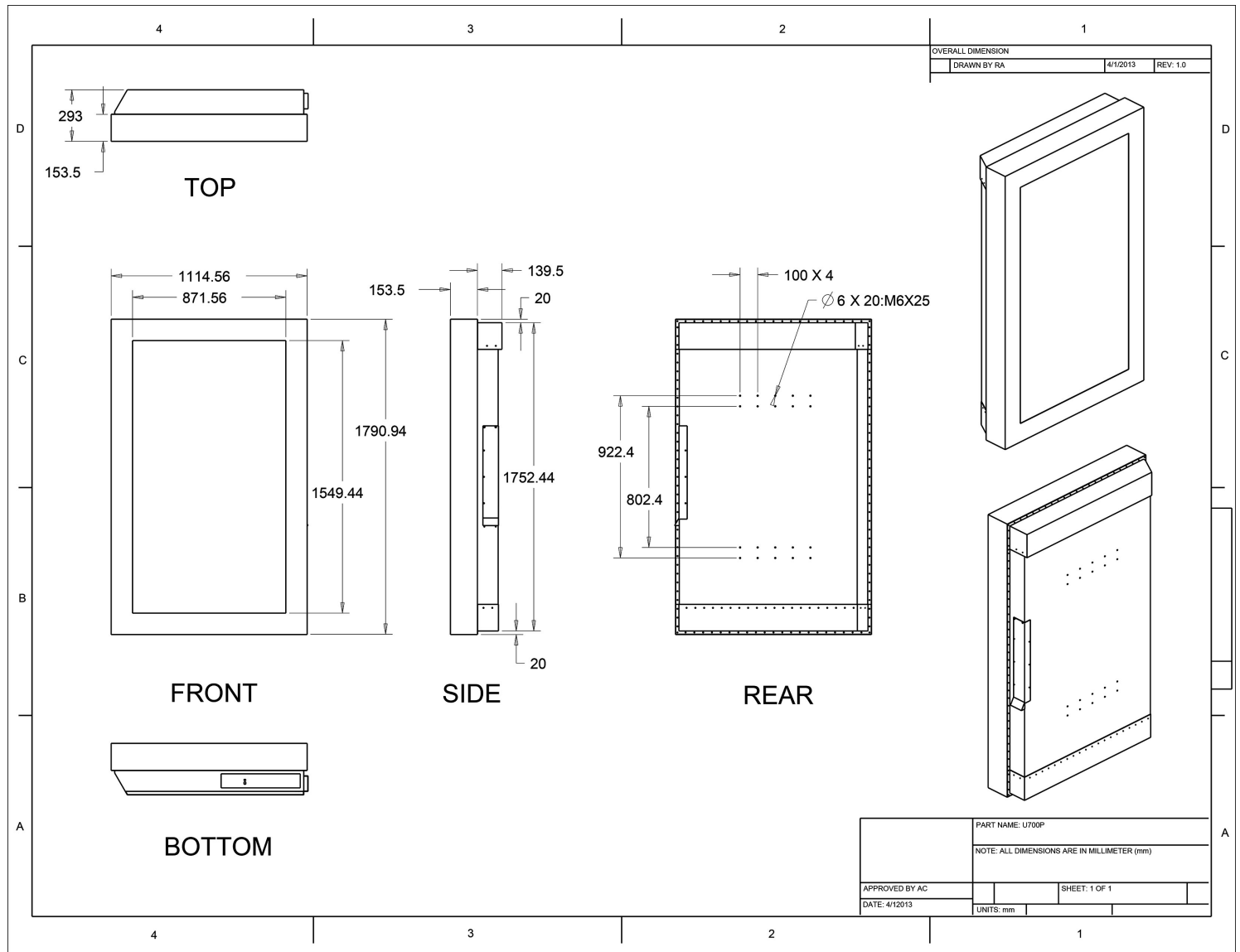


US Manufactured

Our Outdoor LCD Signs are assembled, tested and shipped from our very own factory in USA, giving us the ability to customize signs to your needs.

SUNTRONIC
Outdoor LCD Signage

MECHANICAL DRAWING:



High Quality Parts

Our company uses only the best, using only High Quality parts along with components in USA or imported from Korea, Taiwan and Germany, for quality that you can trust!



Customer Service

Our customer service reps are here to help you with your Outdoor LCD sign. From general questions to technical support, we leave you feeling completely satisfied.



US Manufactured

Our Outdoor LCD Signs are assembled, tested and shipped from our very own factory in USA, giving us the ability to customize signs to your needs.