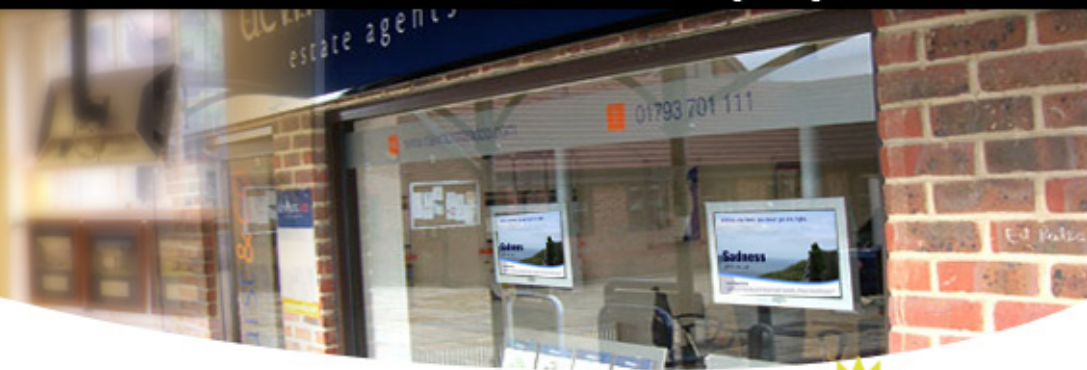


High Brightness Sunlight Readable Behind Window Display



Model: W2200

Features Highlight:

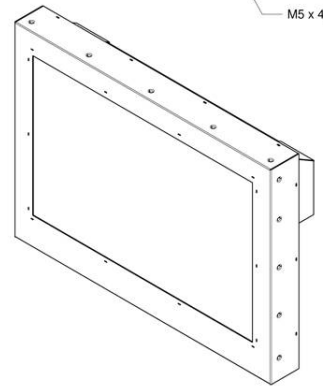
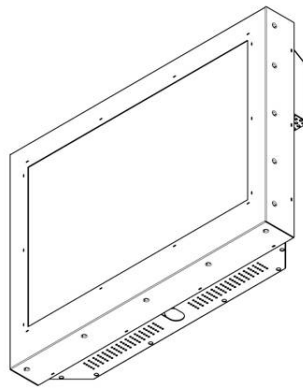
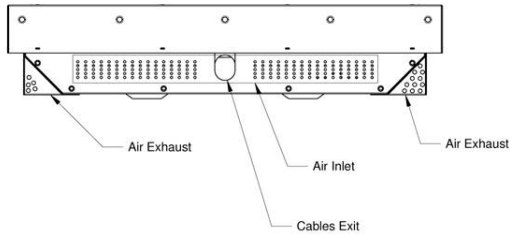
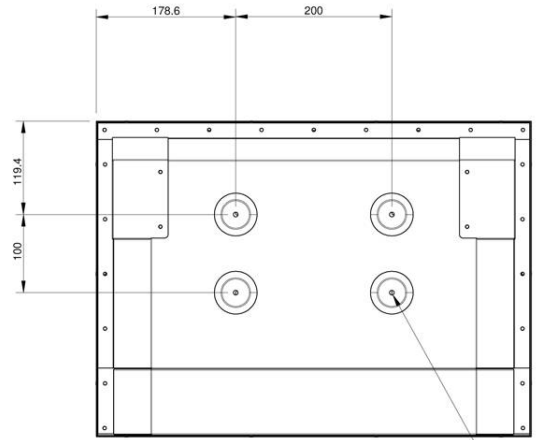
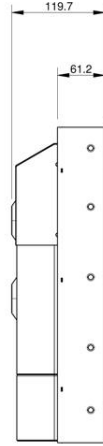
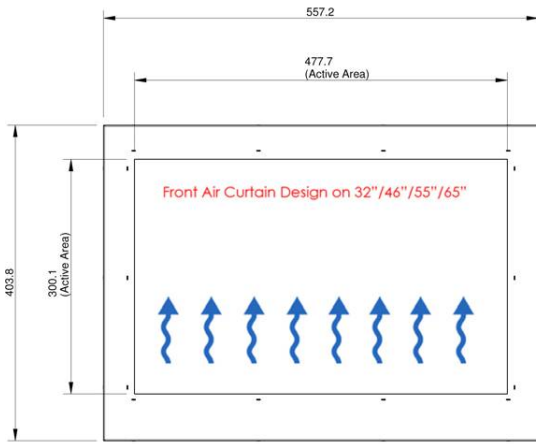
- Perfect Application for Behind window displays
- 1000nits LED Backlight
- Stainless Steel Enclosures (Optional)
- 1680 x 1050 Max. Resolution
- Digital or Analog Interface
- Wide Viewing Angles 178 deg (L/R)
- Auto Dimming
- Aspect Ration: 16:9
- Multiple Video Input Selections
- Completely Sunlight Viewable

Specifications:

Display Size:	22.0 Inch (558.68mm)
Panel Type:	TFT Active
Resolution Capabilities:	1680X1050, VGA to WSXGA
Pixel Format:	640x480, 800x600, 1024x768, 1280 x 1024, 1366x768,1680x1050
Pixel Pitch:	0.282(H) x 0.282(V) mm
Viewing Angle:	H. 170° (- 85° ~ + 85°) , V. 160°(- 80° ~ + 80°)
Active Area:	473.8(H) x 296.1 (V) mm
Contrast Ratio:	1000:1 Typical
Brightness:	1000 nits, LED Backlight Completely Sunlight Viewable
Backlight:	50,000 Hours Typical
Colors Supported:	16.7 M
Video Input:	0.7Vp-p / 75 ohm, Digital NTSC/PAL
Sync:	Separate Sync, Composite Sync, Sync On Green
Power Source:	Internal power supply with universal / Auto-Sensing, AC 90 to 260V, 50 / 60 Hz
Power Consumption:	36 watt, < 2 watt (Support DPMS)
Temperature:	Operating: 0°C ~ 50°C (32°F ~ 122°F) Storage: - 20°C ~ 60°C (- 4°F ~ 140°F)
Humidity	Operating: 10% ~ 90% (no condensation) Storage: 10% ~ 90% (no condensation)
Response Time:	5msec typical, 8msec maximum
Dimensions	With Base(W x H x D): TBD Without Base(W x H x D): 523.2 x 346.0 x 66.0 mm
Weight (Without Stand)	7.5 Kgs / 8.5 Kgs
Warranty:	1 year



Mechanical Drawings:



M5 x 4pcs